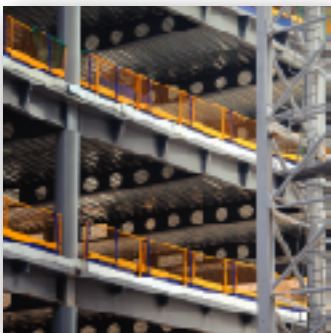




Power & Process



Steel Fabrication



Composite Construction



Industrial/OEM



Marine

UA • 100 Stud Welding Control/Timer Unit*

Manufactured
in the USA



**UA-100
ULTRA ARC**



APPROXIMATE WELD TIME		
STUD DIAMETER	TIME	COVERGAS
3/16"	.05	100
1/8"	.10	100
5/16"	.20	100
3/8"	.30	100
1/2"	.40	100
5/8"	.50	100
3/4"	.60	100

POWER

FUSE

WELD TIME

ON
OFF
POWER

POWER SUPPLY

GUN

GROUND

CONTROL

Stud Welding Range

10 gauge (3mm) through 5/8" (M16) diameter studs

Calibrated Time Control

Continuously adjustable from .05 to 1.2 seconds.

Standard Features

- Lightweight and rugged steel enclosure
- Plug-in circuitry making all components field serviceable
- Solid state timer allows for repeatability and dependability
- Power-on safety switch and accessible front panel fuse

*Note: Control/Timer Unit requires external DC power source with open circuit voltage and current sufficient for diameter of the stud to be welded.



1-800-852-8352



UA • 100 Stud Welding System Control/Timer Unit*



Specifications

Height 11 3/4" (29.84cm)
 Width 11 1/2" (29.21cm)
 Depth 10" (25.4cm)
 Weight 25 lbs. (11.34kg)

Stud Welding Range

10 gauge (3mm) through 5/8" (M16) diameter studs

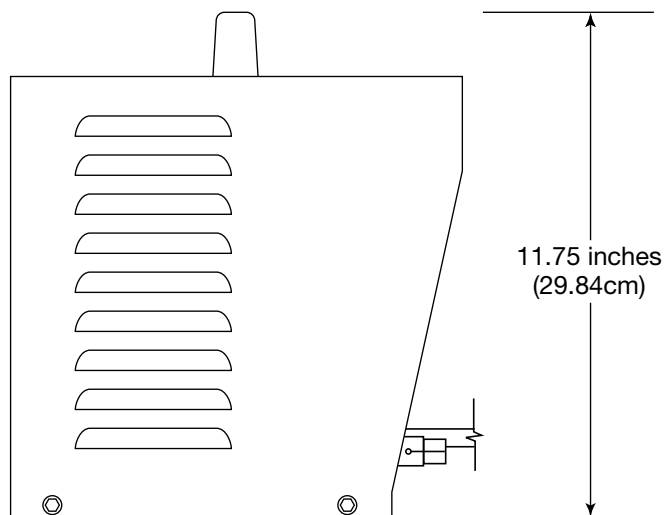
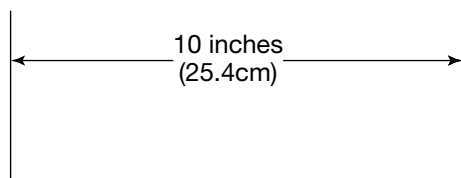
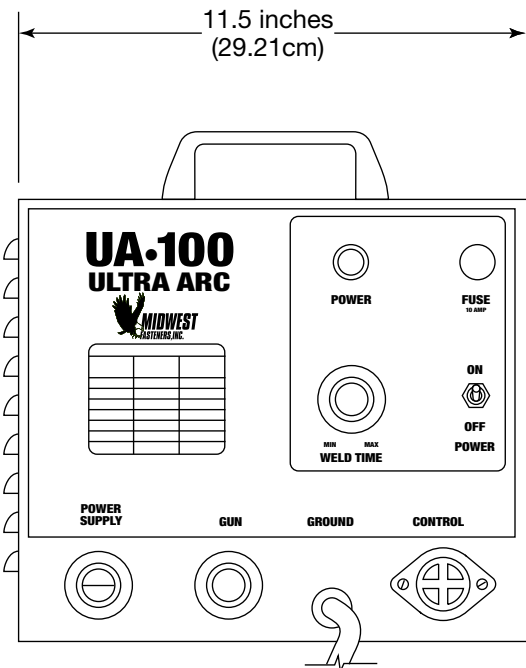
Features Include:

Control unit & stud welding gun* with legs & foot piece
 25 ft. (7.62m) of 1/0 generator cable
 25 ft. (7.62m) of 1/0 ground cable with "C" clamp
 50 ft. (15.24m) of 1/0 combination cable
 *Gun with Plunge Dampener also available.

Electrical Characteristics

WELD BASE (Diameter)	OPEN CIRCUIT VOLTAGE (OCV)	WELD CURRENT (AMPS)
10 gauge (3mm)	All at 65 to 120v, DC	350
1/4" (M6)		425
5/16" (M8)		500
3/8" (M10)		550
1/2" (M14)		800
5/8" (M16)		1200

Note: Control/Timer Unit requires external DC power source with open circuit voltage and current sufficient for diameter of the stud to be welded.



1-800-852-8352

450 Richard Street • Miamisburg, Ohio 45342 • Fax (937) 866-4174 • midwestfasteners.com